



# Data, Standards, GIS and FFP

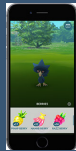
Brent Jones, PE, PLS  
Industry Manager, Cadastre/Land Records  
[bjones@esri.com](mailto:bjones@esri.com)



# GIS Cloud

## Cloud-based GIS

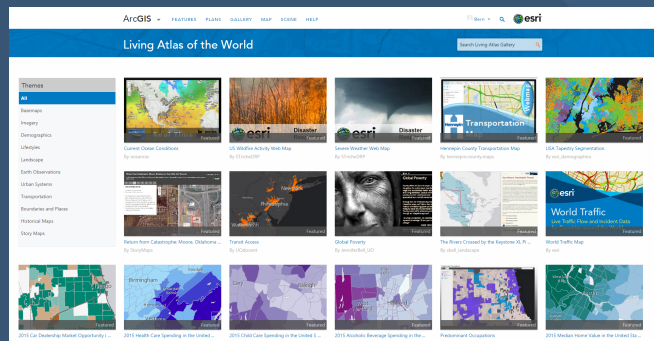
- Hosted publishing and analytics
- Hosted apps
- Hosted content (Living Atlas)
- Sharing and collaboration
- Public ecosystem
- Integration with on-premises Web GIS



# GIS Content

## Living Atlas


- Basemaps
- Demographics and Lifestyle
- Transportation
- Urban Systems
- Earth Observations
- Imagery
- Landscape
- More...



# Services

## GIS Services

Hosted publishing and analysis




- Route
- Proximity
- Find Nearby
- Extract
- Buffer
- Pattern Analysis
- Drive Time Analysis
- Data Enrichment
- Intersect
- Aggregate Points
- Merge
- Dissolve Boundaries
- Union
- Summarize
- Watershed
- Find Hot Spots
- Field Calculator

# Apps

## GIS Apps

Support your workforce and workflows

- Maps for Office
- Open Data
- Collector
- Operations Dashboard
- Explorer
- Navigator
- Workforce Manager
- Drone2Map
- Insights
- Earth



Maps for Office

Insights

# Living Atlas

Ready-to-Use Maps and Data


Compiled from the Best Available Sources

**Basemaps | Imagery | Demographics | Landscape**


Thousands of Maps & Layers  
(Including All the A-16 Layers)

Tens of Thousands of Open Datasets

*Millions of User Contributions . . . Billions of Views per Week*



# Cadastre Building Blocks



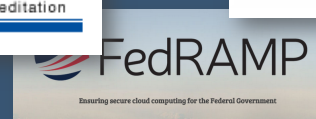
## Collaboration in Colombia

Partners, standards, security.....

- IGAC – National Mapping Agency
- Kadaster International
- Trimble
- Esri
- Esri Colombia



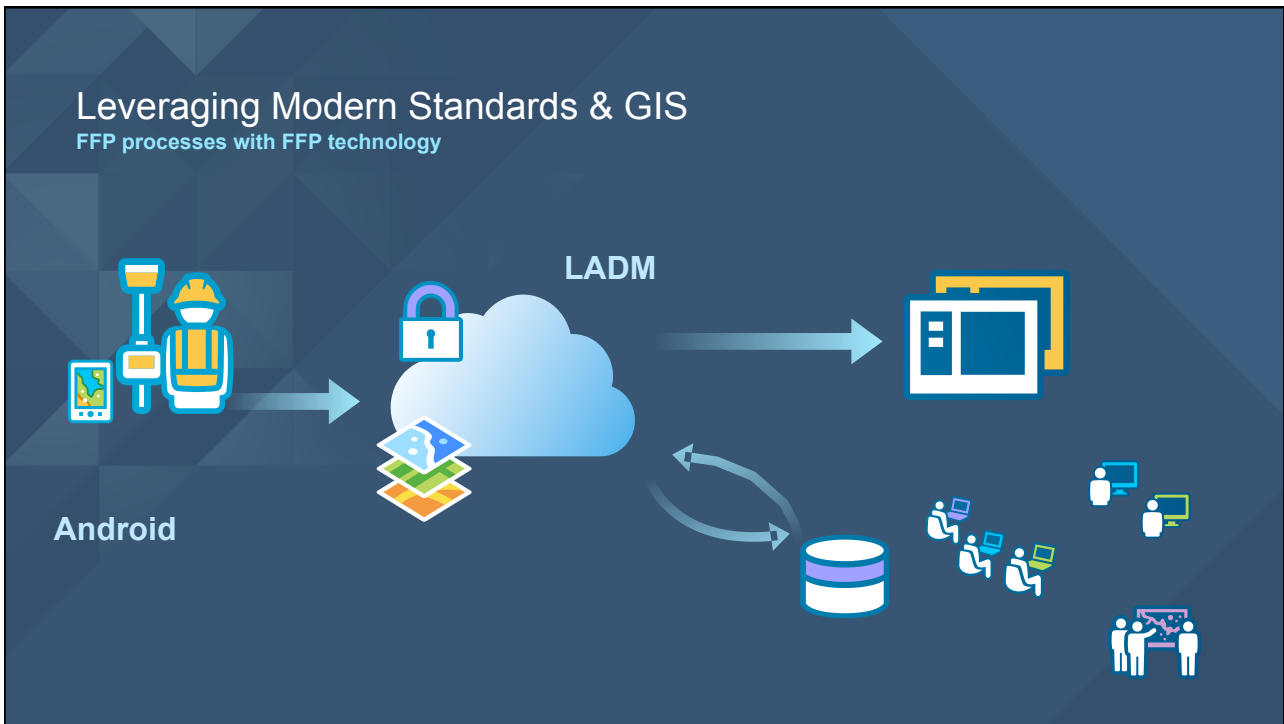
**ISO 19152:2012**  
Geographic information -- Land Administration Domain Model (LADM)



## Why this Approach?

FFP in a couple of weeks.....

- Fast-to-Implement
- Standards-based
- Low Cost
- Accurate
- No Software Development
- Secure
- Flexible
- Leverages External Data
- Uses Many Devices
- Scalable
- Repeatable
- Works Disconnected
- Reliable
- Future Proof



## Data, Standards, GIS and FFP

Brent Jones, PE, PLS  
Industry Manager, Cadastre/Land Records  
[bjones@esri.com](mailto:bjones@esri.com)